



---

**Quick Installation Guide**  
**WIRELESS CHIME FOR BATTERY**  
**VIDEO DOOR BELL**

SM-CDBBW-004

## Thanks

for purchasing a Mach Power product,  
read the manual carefully before use.

This product is covered by a 24 month warranty according to the Consumer Code "Legal Warranty"

Mach Power offers the possibility of activating, within 7 days from the date of purchase, the direct warranty with the manufacturer.

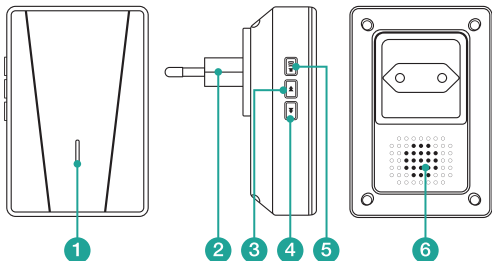
Sending, to the following dedicated number Whatsapp +39 339 3203757, proof of purchase and serial number (Serial No).

For more information, methods and advantages, visit our website [www.machpower.it](http://www.machpower.it)

## Features

1. Easy to install and use
2. 5 levels volume Control, max volume: 110 decibels
3. 55 Ringtones, with LED indicator
4. 1000ft / 300m Wireless working range in open area
5. No batteries, low power consumption
6. Compatible with smart video doorbells

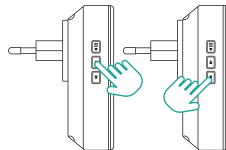
## Product Drawing



1. Led indicator	4. Next ringtone
2. Power plugs	5. Volume control button
3. Previous Ringtone	6. Speakers

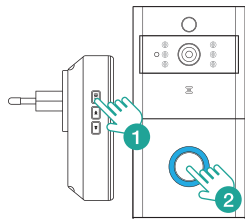
## First Time Using

1. Plug the chime to AC outlet, device will play the features ringtone once at the maximum volume.
2. Short press one volume button to adjust the volume of speaker.
  - Level 1: mute (LED indicator flashes only)
  - Level 2 - 5 : gradual increase
3. Ringtone selection. Press on previous / next button to select your favorite ringtone.



## Pairing in second

1. Select your favorite ringtone, press & hold the volume button for 5 seconds till you heard a "ding" sound from the chime.
2. The chime will be in pairing mode for eight seconds. Press the call button on the smart doorbell during that time, and the chime will make a "ding-ding" sound. Pairing Succeeded.
3. Press again the call button, the chime will alert with ringtone and Led Flashing.



## Clear Connection

1. Press & hold the next button for 5 seconds to delete the pairing codes.
2. The chime will be restored to factory default.

